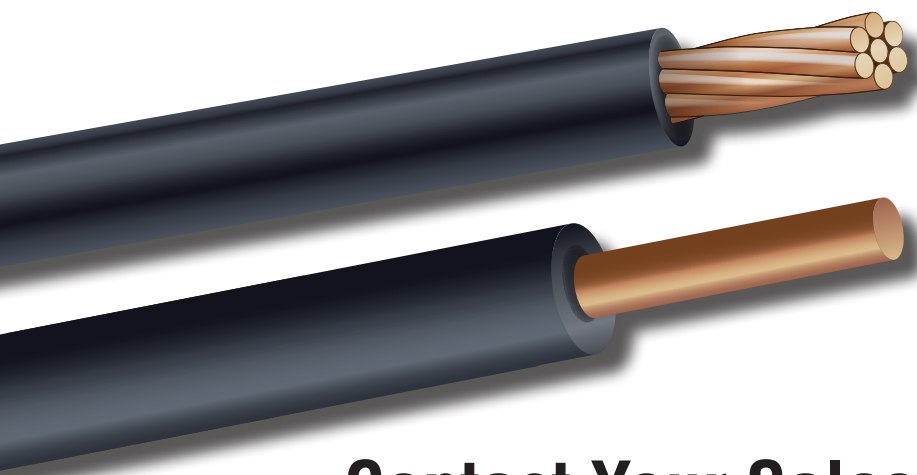
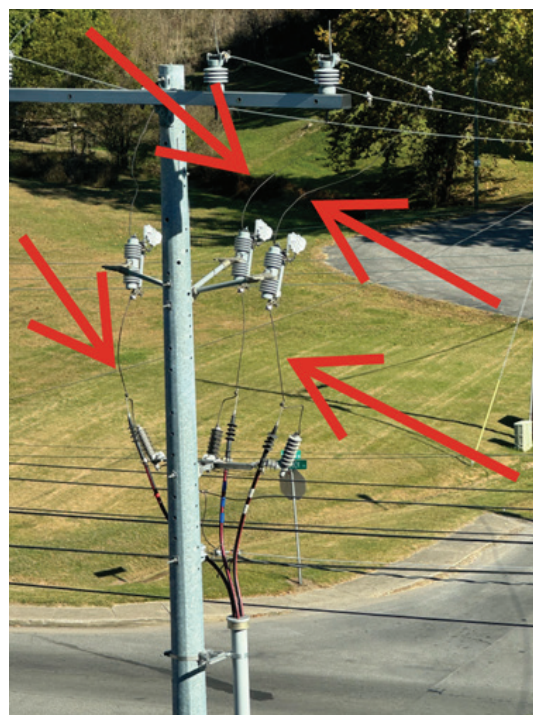


COVERED TAP WIRE

Used to connect an overhead phase conductor to equipment bushings. This aids in preventing outages caused by wildlife connecting the energized tap wire with another phase or ground plane. Covered Tap Wire may also be used in substation equipment connections and as covered ground leads

- **Solid or Stranded Bare Copper Conductor**
- **Black Thermoplastic Rubber (TPR) Insulation**

Conductor Size	Stranding	Overall Diameter	Weight
AWG		inches	lbs/kft
6	7	0.478	145
6	Solid	0.462	143
4	7	0.532	214
4	Solid	0.504	212
2	7	0.583	290
1/0	19	0.662	430
4/0	19	0.812	785



Contact Your Salesperson Today!